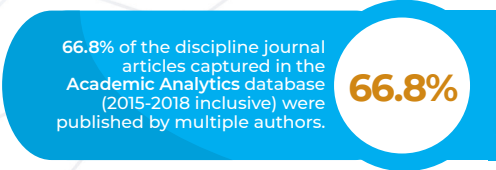
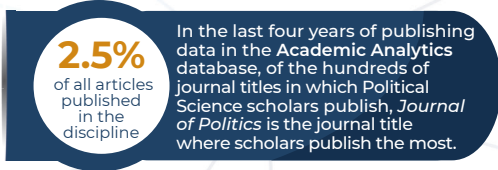
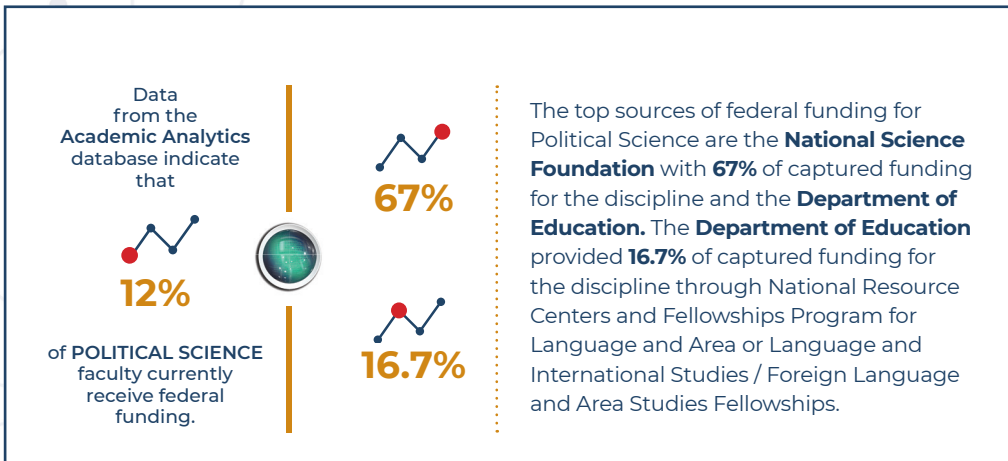


# DISCIPLINE FastFacts

from Academic Analytics



Public Policy is the discipline most often involved in collaborative research with 4.9% of all Political Science co-authored journal publications. The next two most frequent disciplines are International Affairs and Development and Economics with 4.9% and 4.2% of all Political Science co-authored journal publications, respectively. Do you know who are the top potential collaborators in these fields that best complement your research, and where they are located?



Since **Academic Analytics** uses the individual researcher as the unit of record, we can look across all faculty in a discipline to view their current rank and the years since their most advanced degree.

FULL professor	ASSOCIATE professor	ASSISTANT professor
<b>31.2</b> YEARS	<b>18.1</b> YEARS	<b>7</b> YEARS

Average academic ages (years since their most advanced degree) of Political Science scholars nationally

Percent of faculty ranks within the national discipline		
<b>44.8%</b>	<b>31.5%</b>	<b>23.7%</b>

How does the distribution of faculty in your department compare to the national averages, and what are the implications for planning?

**Research Insight from Academic Analytics can help answer that.**

There are **4,543** individuals in the **Academic Analytics** database who are affiliated with Political Science departments.

Of the faculty population for whom we can infer gender

<b>68.6%</b> MALE	<b>31.4%</b> FEMALE
----------------------	------------------------

According to the data captured in the **Academic Analytics** database, **39.7%** of Political Science faculty have received a national honorific award. The American Political Science Association provides the most honorific awards for the discipline, accounting for **25.2%** of all recorded awards. Of the faculty population for whom we have been able to identify gender, the distribution of awards granted by the American Political Science Association is **67.6%** of awards going to male scholars and **32.4%** going to female scholars.