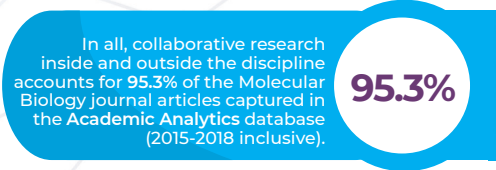
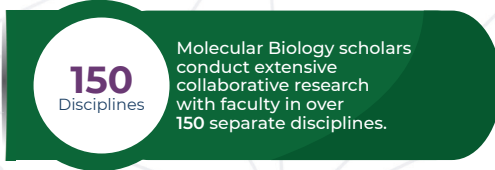
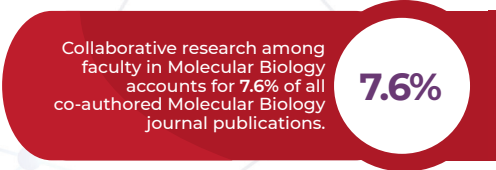
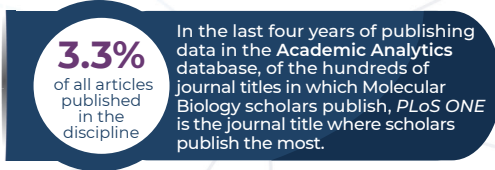
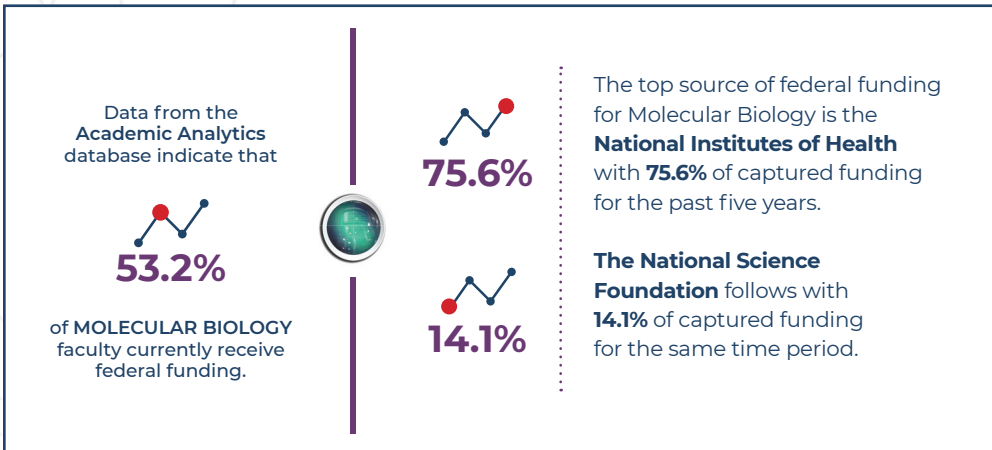


DISCIPLINE FastFacts

from Academic Analytics



Collaborations with other disciplines most often involves researchers in Biochemistry where they account for **7.1%** of all co-authored journal publications. The next frequent collaborative field, Cell Biology, accounts for **6.7%** of the total co-authored journal publications for Molecular Biology. Do you know who are the top potential collaborators in these fields that best complement your research and where they are located?



Since **Academic Analytics** uses the individual researcher as the unit of record, we can look across all faculty in a discipline to view their current rank and the years since their most advanced degree. (The number and duration of post-doc appointments are not tracked.)

FULL professor	ASSOCIATE professor	ASSISTANT professor
33.9 YEARS	23.3 YEARS	14.1 YEARS
Average academic ages (years since their most advanced degree) of Molecular Biologists nationally		
Percent of faculty ranks within the national discipline		
53%	24.7%	22.3%
How does the distribution of faculty in your department compare to the national averages, and what are the implications for planning?		
Research Insight from Academic Analytics can help answer that.		

There are **3,505** individuals in the **Academic Analytics** database who are affiliated with Molecular Biology departments.

Of the faculty population for whom we can infer gender

71% MALE	29% FEMALE
-----------------	-------------------

According to the data captured in the **Academic Analytics** database, **31.9%** of Molecular Biology faculty have received a national honorific award. The American Association for the Advancement of Science provides the most honorific awards for the discipline, accounting for **12.2%** of recorded awards. Of the faculty population for whom we have been able to identify gender, the distribution of awards granted by the American Association for the Advancement of Science is **76.5%** of awards going to male scholars and **23.5%** going to female scholars.